

Terminal Park Kindergarten Enrollment

2021-2022

Meet our Kindergarten Teachers



Mrs. Barrett



Miss. Harlor



Mrs. Manning

Staff to know



Mike Weibel - Principal



"click" here

Julie Gragg - School Counselor
Elsa Alvarez - Family Liaison
Melissa Slatt Maxwell - Behavior
Intervention Specialist
Cathy Meyer - School Nurse
Joelle Carr - Health Tech.
Vickie Jones - Office Manager
Misha Perry - Office Professional
Dave Glidewell - Custodian



"click" here



Tim Hupperten - Assistant Principal

Chris Williams - Librarian
Gary Greer - PE Teacher
Emily Buchanan - Music Teacher
Rylee Terjeson - Tech Specialist
Krysta Matt - Tech Specialist
Devan Sweeney - Instructional Specialist
Jesslyn Kuzaro - Title / Reading Specialist
Rose Finley - Math Specialist
Tyler Perrin - Custodian

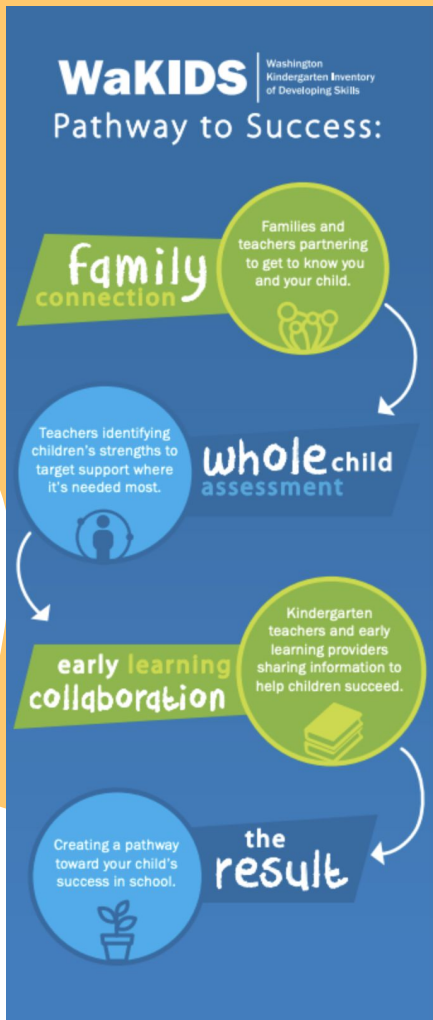




Things to Know

- Your child must turn 5 by August 31st to be eligible for kindergarten.
- The first day of school for kindergarten is September 13th, 2021
- Kindergarten school day 8:40 - 3:10 pm.
- A letter will be sent to your home at the end of August to notify you of the tentative teacher assignment





WaKids

The Washington Kindergarten Inventory - or WaKids - is a process for:

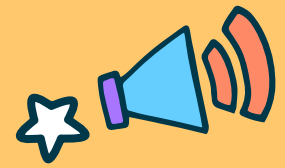
- Welcoming students and their families to kindergarten.
- Assessing student strengths.
- Discussing the characteristics of children's development and learning that will enable them to be successful in school

WaKids Brochure

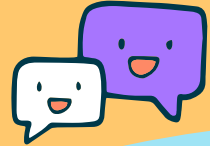
Tim Hupperten with
a few words about
WaKids



Ready for Kindergarten?



Our teachers share ideas on things you can work on over the summer to help your child be ready to learn in kindergarten.



Mrs. Barrett



Mrs. Manning



Miss Harlor





Julie Gragg, School
Counselor

Terminal Park Counseling

- Classroom Lessons
- Small Group Counseling
 - School Readiness
- First Day of School
 - Contact me at:

jgragg@auburn.wednet.edu or call
(253) 931-4978





Mrs. Bulson / Mrs. Epple - ELL

The Terminal Park Elementary English Language Learners (ELL) program offers research-based instruction to students who need to develop English language proficiency. ELL teachers work collaboratively with content teachers to provide instruction in speaking, listening, reading, and writing in English.



Communication



Call or email if your child will not be at school.

Keep the office informed of new phone numbers



Call as early as possible if your child has a different transportation routine

Call with questions 253 931-4978

Office hours: 8:15- 3:30
8:00 - 4:00 next year



mperry@auburn.wednet.edu
vjones@auburn.wednet.edu

253 931-4978



Questions about Immunizations:

[Click here for immunization information](#)

If you have additional questions, please email the Terminal Park nurse:

cmeyer@auburn.wednet.edu



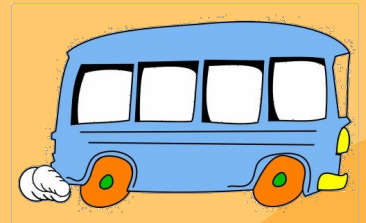
Transportation

The Auburn School District offers bus transportation to all students:

- Whose residence is beyond the one mile radius from the school to which the student is assigned
- Whose walking route to school is hazardous
- Whose disability prevents him/her from walking or providing for his/her own welfare while walking; or
- Who has another compelling and legally sufficient reason to receive transportation services.

Transporting students on a waiver must be provided by the family.

[Click here to find your bus stop](#)





Registration





Documentation Required:

Registration can be completed online, or you can pick up a packet in the office.

In addition to the Auburn School District registration packet, these items are also required:

1. Proof of Residency
 - Example: lease or utility bill
2. Immunization Records
 - Medically verifiable
 - Download from MyIR MyIR.net
3. Proof of Age
 - Example: a birth certificate





Where to Register

[Click here for online registration](#)

If you have questions, please email the Terminal Park office

mperry@auburn.wednet.edu

vjones@auburn.wednet.edu